

Installation manual

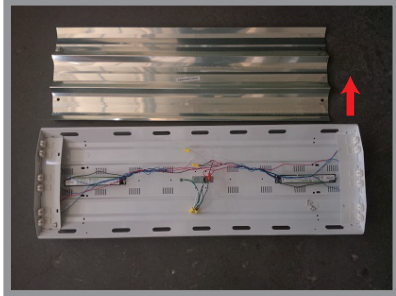
Starco Fast-Fuse socket kit
SLT8K-2F, SLT8K-3F, SLT8K-4F, SLT8K-6F, SLT8K-8F

WARNING

- FAILURE TO FOLLOW THESE INSTRUCTIONS AND WARNINGS MAY RESULT IN SERIOUS INJURY OR SIGNIFICANT PROPERTY DAMAGE. For your protection, carefully read these warnings and instructions in their entirety before installing or maintaining this equipment. These instructions do not attempt to cover all installation and maintenance situations. If you do not understand these instructions or if additional information is required, contact Starco representative.
 - Risk of fire or electric shock. LED Retrofit Kit installation requires knowledge of luminaires and electrical systems. Installation should be performed only by a qualified electrician in accordance with the National Electrical Code and relevant local code.
 - To prevent wiring damage or abrasion, do not expose wiring to edges of sheet metal or other sharp objects.
 - **RISK OF FIRE OR ELECTRIC SHOCK** Luminaire wiring and electrical parts may be damaged when drilling for installation of retrofit kit.
- *The 6 lamp fixture is used for demonstration in this installation manual

1. Shut off power from breaker

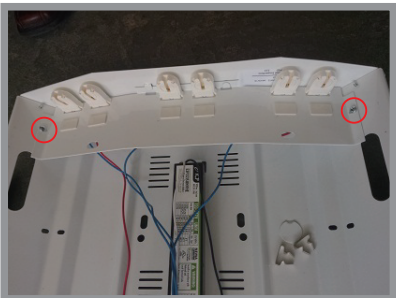
2. Remove front lens/reflector and fluorescent tubes from fixture



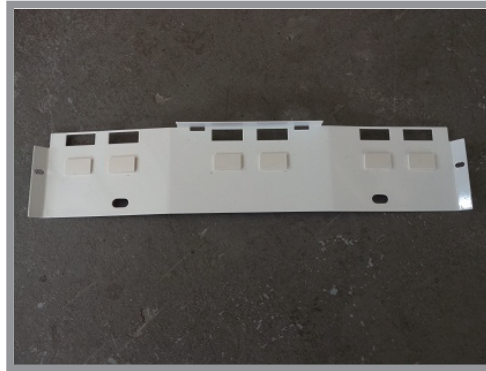
3. Disconnect main power feed wires with wire-nuts.

4. Unpack LED socket wire kit

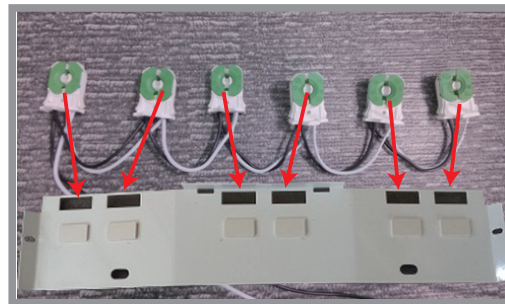
5. Unscrew socket panel on one side, lifting up to gain access to sockets.



6. Remove sockets including connected wiring.



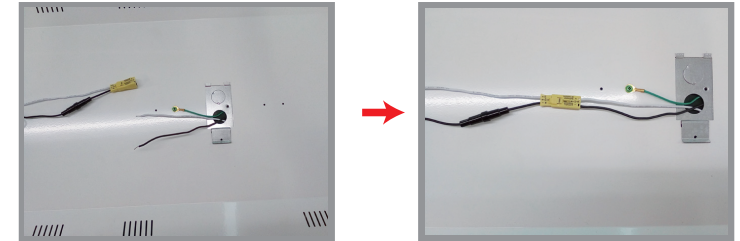
7. Place in new LED prewired kit sockets in place. Ensure the sockets are seated properly



8. Screw socket panel back on. Only one set of sockets will be replaced. The other sockets are now just mechanical holders for the tube. Replace the other side sockets if necessary.



9. Connect kit to main wires through the connector.



10. (Optional) Remove ballast by cutting the output wires leading to the sockets on other side. Ensure small amount of wire is hanging out of socket.

11. (Optional) Unscrew ballast and remove

12. Place Safety UL modification sticker on the fixture.

13. Place reflector/ballast cover back in place. Remove tubes from packaging including plastic end pin covers and place tubes in sockets ensuring the correct end of tube is connected to the live sockets

14. Place lens if any, back in place

15. Turn breaker switch back on and turn lights on

Warning

Shut off the power and disconnect the connector before replacing the fuse in the fuseholder.

