



SLAL1 LED AREA LIGHT

DESCRIPTION

The Starco SLAL1 LED Area Light is a high-performance, energy-efficient lighting solution designed for outdoor spaces such as parking lots, streets, and large open areas. This versatile fixture features advanced LED technology, providing bright, uniform illumination with reduced energy consumption compared to traditional lighting systems. The SLAL1 is built to withstand harsh environmental conditions with a durable, weather-resistant housing. Its sleek design and multiple mounting options make it an ideal choice for enhancing visibility and safety in various outdoor applications. SLAL1 offers a range of lumen packages from 11,000 to 80,000 lumens and delivers up to 160 lumens per watt for maximum rebate eligibility and years of free maintenance.

SPECIFICATION FEATURES

Construction & Materials

- Die-cast aluminum heatsinks maximize LED lifetime and optimal performance
- IP66 Rated and UV resistant powder coat finish
- Light weight design allows for a less obtrusive installation
- Includes multiple mounting options
- Wattage & CCT selectable

Electrical System

- High efficiency driver
- Input Voltage: 120-277V, 347V/480V, 50/60Hz
- Operating Temperature: -40°C (-40°F) to 55°C (113°F)
- 0-10V dimmable
- Non Flickering (Flicker rate <3%)
- Power Factor: >0.95
- Total Harmonic Distortion: <15%
- Surge Protection: 10kV

Optical System

- IES type II, III, IV, V distribution available
- Interchangeable lenses

Occupancy Sensor

- Selectable mode high/low/off passive infrared (PIR)
- Photocell
- Optional bluetooth remote control

LED

- CRI: 80
- CCT: 3000K, 4000K, 5000K
- Calculated L₇₀ Lifetime: >167,000 hours @ 25°C
- Reported L₃₀ Lifetime: >50,000 hours @ 25°C

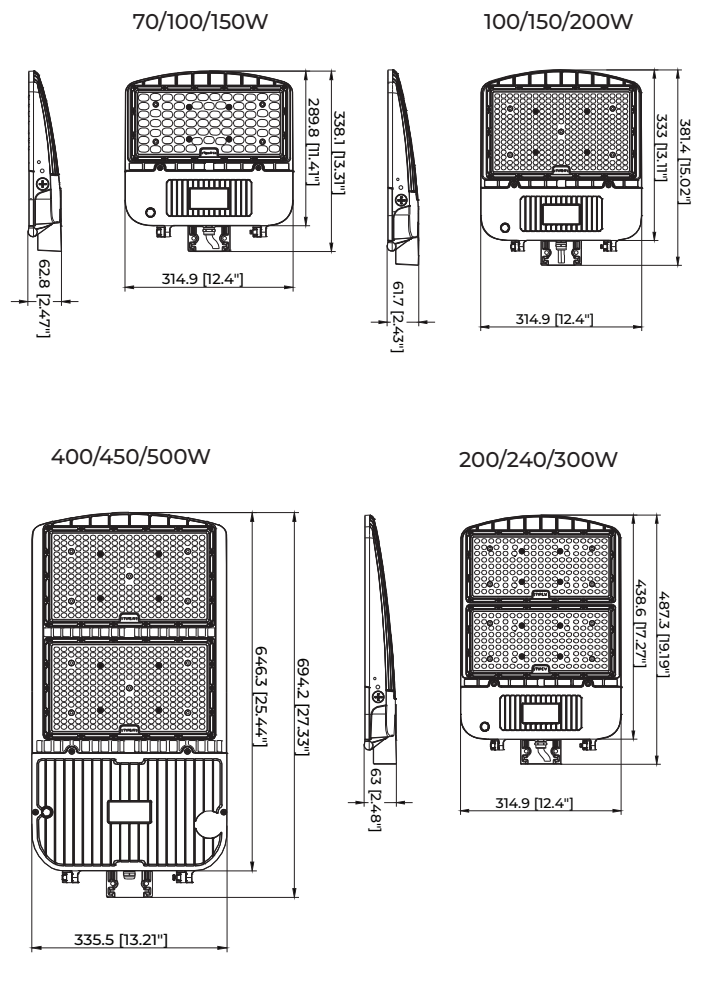
Warranty

- 10 Years

Project:	
Type:	
Note:	



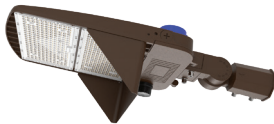
DIMENSION



ORDER INFORMATION

SLAL1 LED AREA LIGHT

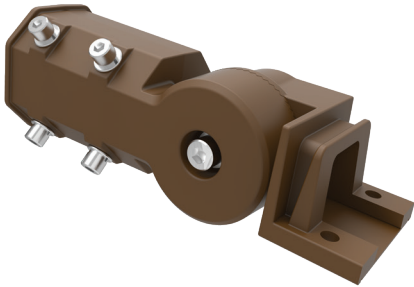
Example: SLAL1-150-4-50-U-SC-BL

SLAL1						
Series	Wattage	Optics	CCT	Voltage	Sensor	Color
SLAL1=LED Area Light	150 = 70/100/150W 200 = 200W 300 = 200/240/300W 400 = 400W 500 = 400/450/500W	2=Type II 3=Type III 4=Type IV 5=Type V 6=Type III Back Light Control 7=Type IV Back Light Control 8=Left Side Cutoff 9=Right Side Cutoff	30=3000K 40=4000K 50=5000K CS=CCT Adjustable 3000k/4000K/5000K	U=120-277V H=277-480V	SC=Shorting cap PC=Photocell sensor PS=PIR sensor MS=Microwave sensor BM=Bluetooth sensor PM=Photocell & Microwave occupancy sensor PP=Photocell & PIR occupancy sensor	BR=Bronze WH=White BL=Black
Accessories						
<div> <div> SLAL1-MK1=Slip fitter SLAL1-MK2=Square/round pole mount with slip fitter SLAL1-MK3=Square/round pole mount SLAL1-MK4=Trunnion mount SLAL1-MK5=Yoke mount SLAL1-MK6=Arm mount with slip fitter </div> <div> SLAL1-MK7=House shield  </div> </div>						

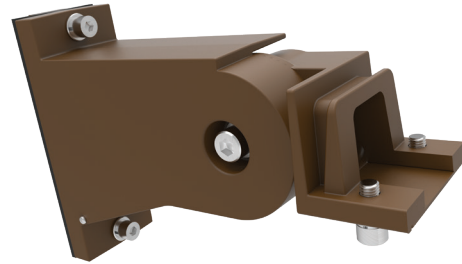
PERFORMANCE DATA

Wattage	CRI	Lumens	Efficacy	CCT
70	80	11200	160	4000K/5000K
70	80	10500	150	3000K
100	80	16000	160	4000K/5000K
100	80	15000	150	3000K
150	80	24000	160	4000K/5000K
150	80	22500	150	3000K
200	80	32000	160	4000K/5000K
200	80	30000	150	3000K
240	80	38400	160	4000K/5000K
240	80	36000	150	3000K
300	80	48000	160	4000K/5000K
300	80	45000	150	3000K
400	80	64000	160	4000K/5000K
400	80	60000	150	3000K
450	80	72000	160	4000K/5000K
450	80	67500	150	3000K
500	80	80000	160	4000K/5000K
500	80	75000	150	3000K

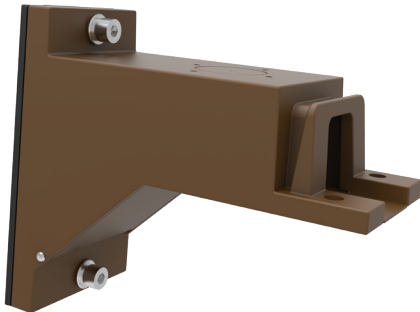
SLAL1-MK1 Slip fitter



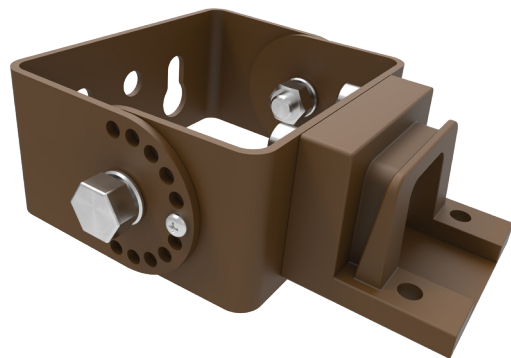
SLAL1-MK2 Square/round pole mount with slip fitter



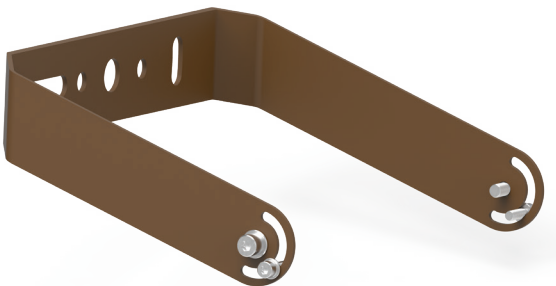
SLAL1-MK3 Square/round pole mount



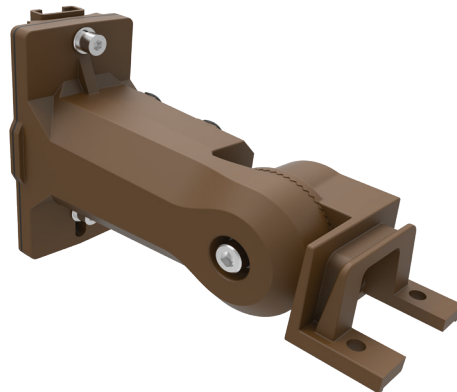
SLAL1-MK4 Trunnion mount



SLAL1-MK5 Yoke mount

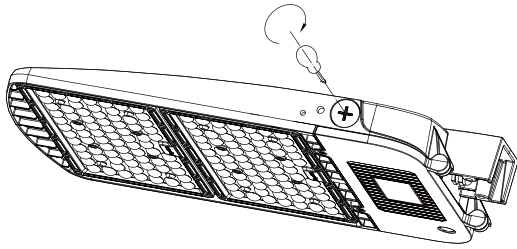


SLAL1-MK6 Arm mount with slip fitter

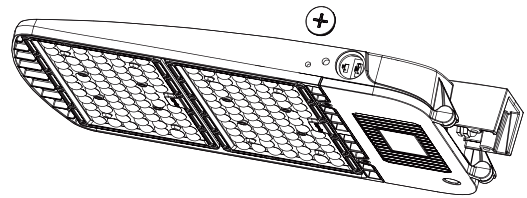


Wattage & CCT Selection

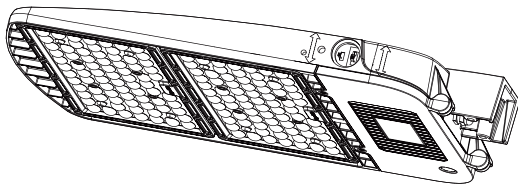
1. Unscrew the screw on the side.



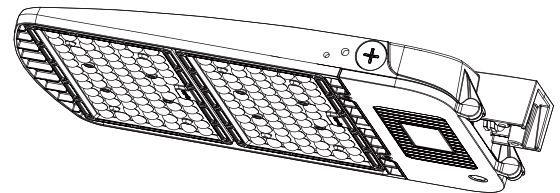
2. Remove the screw on the side.



3. Turn the switch of CCT to the desired color temperature.
Turn the switch of power to the desired wattage.



4. Install the screw back.

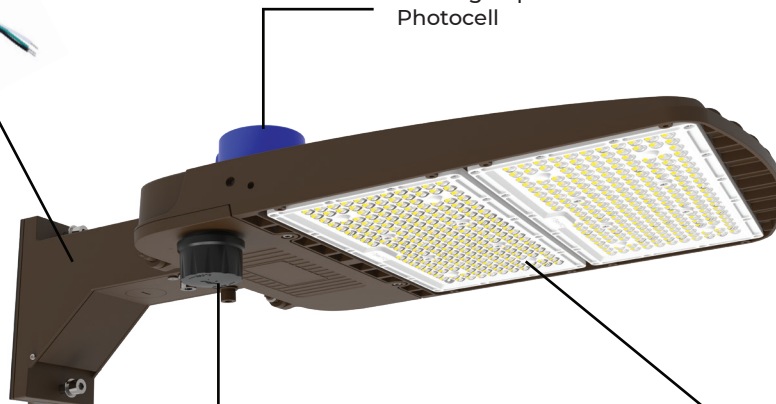


Sensor

SPD 10KV/20KV




Locking Cap
Photocell



Interchangeable Lens

PIR Sensor
Microwave Sensor

Bluetooth Sensor 

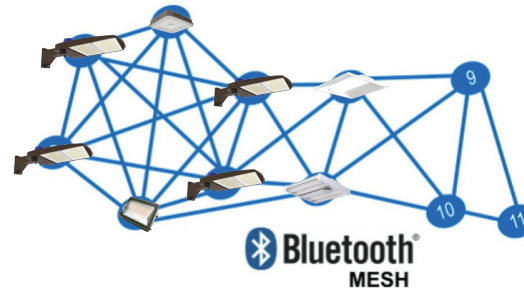
CYC - Bluetooth Mesh Wireless Sensor



Features

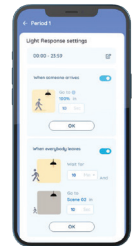
- 2 channels 0-10V
- 12-24VDC powered
- PIR motion sensing
- Ambient daylight sensing
- Output: 15mA @0-10VDC
- Dimming range: 0-100%
- Working temperature: -20 to 50°C (-4 to 122°F)
- BLE5.2 based non-flooding intelligent communication
- Available with either an audio jack or a Zhaga Book 18 connector
- IP65 rated for outdoor applications

Our lights feature integrated Bluetooth Mesh wireless sensors, enabling seamless wireless control for enhanced efficiency and flexibility. This technology allows for real-time monitoring, automated adjustments, and energy savings without the need for additional wiring, making installation and operation simple and cost-effective.



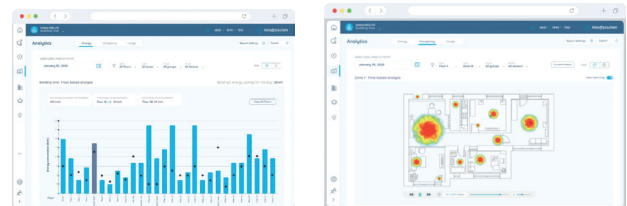
Mobile App

- For commission, configuration and controlling lighting networks including device replacement feature that makes commission easier.
- Setting up schedules, scenes and animations for individual devices or groups or zones
- Always get the latest features and improvements using OTA updates for devices
- Safe and reliable communication with AES 128-bit encryption and ensure safety using 4-digit code



Desktop App

- Track power usage and access reports.
- Occupancy pattern and device usage
- Emergency testing report



BMS Intergration

- Starco Control ecosystem leverages the Niagara framework to intergrate with any of the 120+ BMS protocols.
- Very simple to connect as plugging the two systems into a common Ethernet network.
- All data can be shared and BMS can monitor and control the lighting system.
- Adding OpendADR gateway, the customer can take advantage of any current or future utility demand response programs including peak pricing, capacity bidding and direct load control

