



SLAL1 LED AREA LIGHT

Project:	
Type:	
Note:	

DESCRIPTION

The Starco SLAL1 LED Area Light is a high-performance, energy-efficient lighting solution designed for outdoor spaces such as parking lots, streets, and large open areas. This versatile fixture features advanced LED technology, providing bright, uniform illumination with reduced energy consumption compared to traditional lighting systems. The SLAL1 is built to withstand harsh environmental conditions with a durable, weather-resistant housing. Its sleek design and multiple mounting options make it an ideal choice for enhancing visibility and safety in various outdoor applications. SLAL1 offers a range of lumen packages from 11,000 to 80,000 lumens and delivers up to 160 lumens per watt for maximum rebate eligibility and years of free maintenance.



SPECIFICATION FEATURES

Construction & Materials

- Extruded aluminum heatsinks maximize LED lifetime and optimal performance
- IP66 Rated and UV resistant powder coat finish
- Light weight design allows for a less obtrusive installation
- Includes multiple mounting options
- Wattage & CCT selectable

Electrical System

- High efficiency driver
- Input Voltage: 120-277V, 347V/480V, 50/60Hz
- Operating Temperature: -40°C (-40°F) to 55°C (113°F)
- 0-10V dimmable
- Non Flickering (Flicker rate <3%)
- Power Factor: >0.95
- Total Harmonic Distortion: <15%
- Surge Protection: 6kV
-

Optical System

- IES type II, III, IV, V distribution available
- Interchangeable lenses

Occupancy Sensor

- Selectable mode high/low/off passive infrared (PIR)
- Photocell
- Optional bluetooth remote control

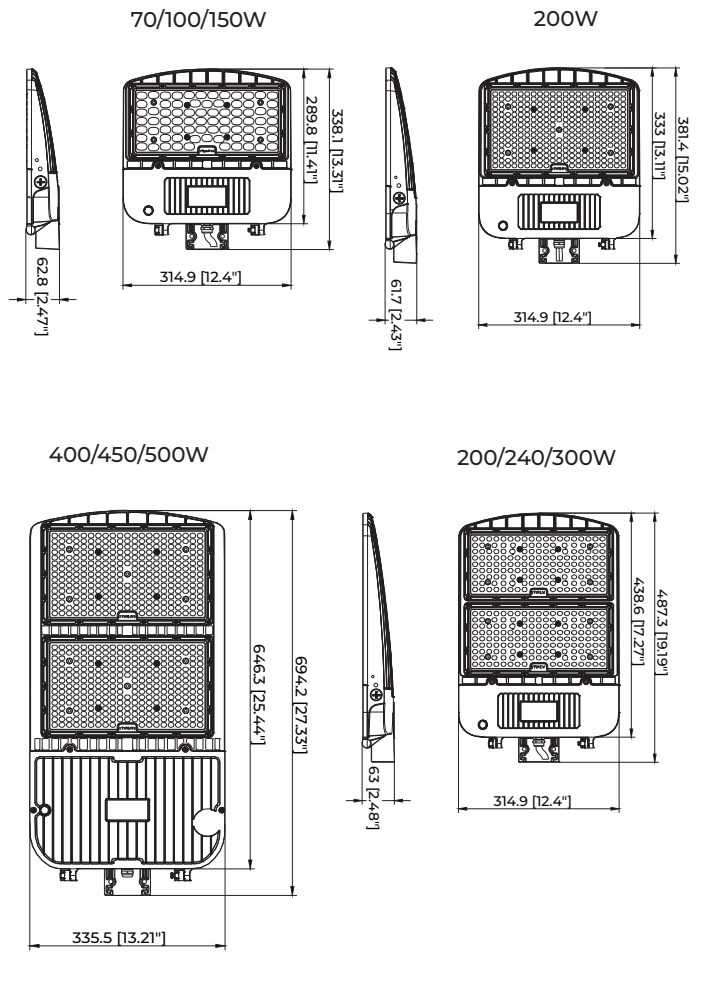
LED

- CRI: 80
- CCT: 3000K, 4000K, 5000K
- Calculated L₇₀ Lifetime: >295,000 hours @ 25°C
- Reported L₃₀ Lifetime: >86,000 hours @ 25°C

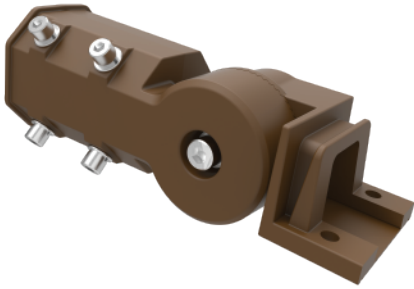
Warranty

- 10 Years

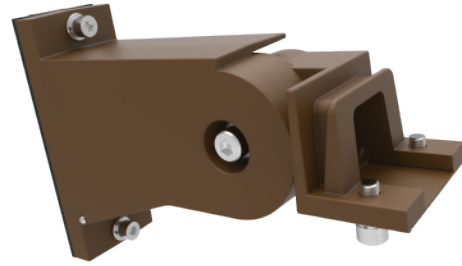
DIMENSION



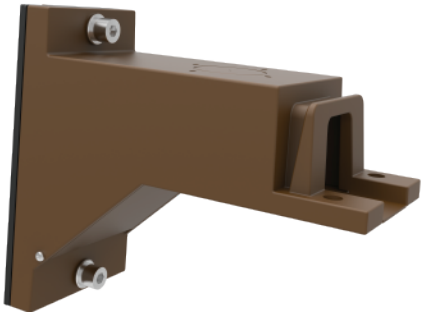
SLALI-MK1 Slip fitter



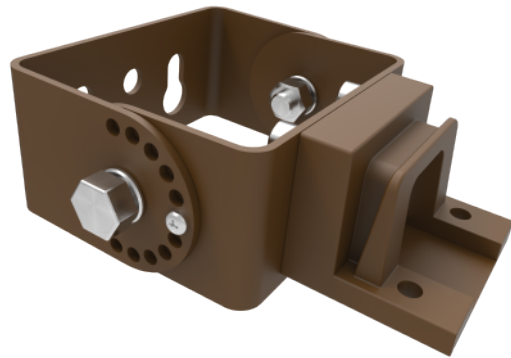
SLALI-MK2 Square/round pole mount with slip fitter



SLALI-MK3 Square/round pole mount



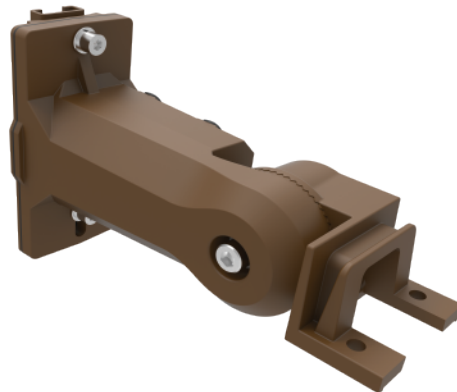
SLALI-MK4 Trunnion mount



SLALI-MK5 Yoke mount

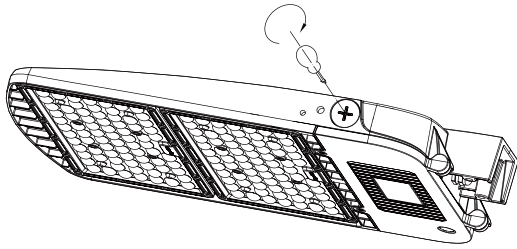


SLALI-MK6 Arm mount with slip fitter

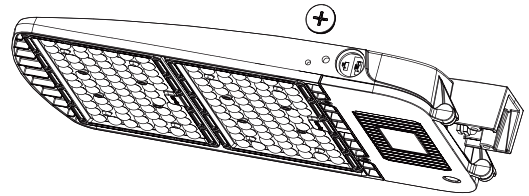


Wattage & CCT Selection

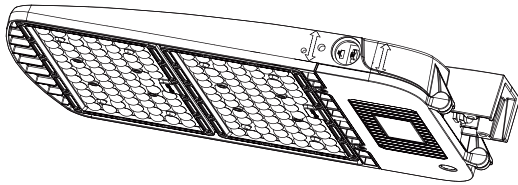
1. Unscrew the screw on the side.



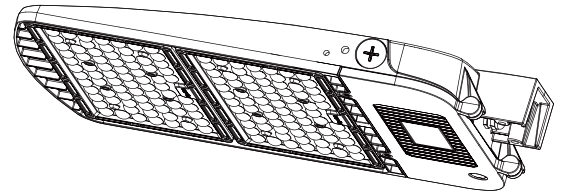
2. Remove the screw on the side.



3. Turn the switch of CCT to the desired color temperature. Turn the switch of power to the desired wattage.



4. Install the screw back.

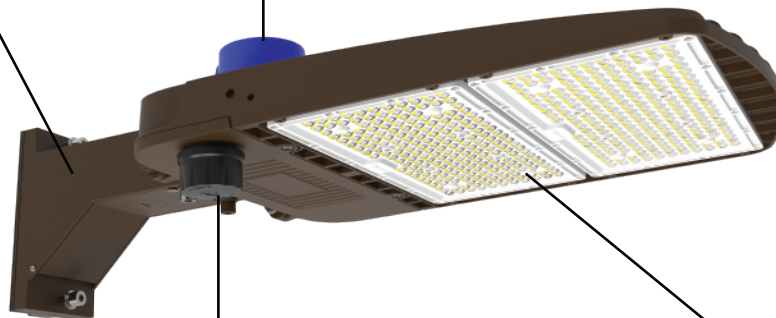


Sensor

SPD 10KV/20KV



Locking Cap
Photocell



Interchangeable Lens

PIR Sensor
Microwave Sensor