



Starco Lighting Inc  
2495 Main Street, Suite#218 Buffalo NY 14214  
info@starcous.com 716-931-9322

## Installation Instruction - SE Emergency LED Tube

### Warning, cautions and operating instructions

Before beginning the installation process, please be aware of the following safety warnings:

**WARNING - Risk of Fire or Electric Shock.** Luminaire wiring and electrical parts may be damaged when drilling for installation of LED retrofit kit. Check for enclosed wiring and components.

**WARNING - Risk of fire or electric shock.** Install this kit only in luminaires that have the construction features and dimensions shown in the photographs and/or drawings.

Do not make or alter any open holes in an enclosure of wiring or electrical components during kit installation.

**WARNING - Prevent Wiring Damage:** To avoid wiring damage or abrasion, ensure that wiring is not exposed to edges of sheet metal or other sharp objects.

**WARNING - Risk of fire or electric shock.** This product must be installed in accordance with the applicable installation code by a person familiar with the construction and operation of the product and the hazards involved.

**WARNING - Risk of fire or electric shock.** LED Retrofit Kit installation requires knowledge of luminaires electrical systems. If not qualified, do not attempt installation. Contact a qualified electrician.

**WARNING - To avoid potential fire or shock hazard,** do not use this retrofit kit in luminaires employing shunted bi-pin lampholders. Note: Shunted lamp holders are found only in fluorescent luminaires with Instant-Start ballasts. Instant-start ballasts can be identified by the words "Instant Start" or "I.S." marked on the ballast. This designation may be in the form of a statement pertaining to the ballast itself, or may be combined with the marking for the lamps with which the ballast is intended to be used, for example F40T12/IS. For more information, contact the LED luminaire retrofit kit manufacturer. Only suitable for single-end powered lamps.

Installers should not disconnect existing wires from lampholder terminals to make new connections at lampholder terminals. Instead installers should cut existing lampholder leads away from the lampholder and make new electrical connections to lampholder lead wires by employing applicable connectors.

Installers should examine all parts that are not intended to be replaced by the retrofit kit for damage and replace any damaged parts prior to installation of the retrofit kit.

**WARNING - Risk of fire.** Input ratings may need to be determined based on any configuration(s) permitted by the installation instructions. Regardless of the configuration(s) of the retrofit kit, the input ratings of the overall retrofit kit shall not exceed the marked input ratings of the host luminaire.

The installation instructions shall indicate the environmental locations the retrofit kit is suitable for. (i.e. Damp locations or Wet locations)

Prior to installation, review all environmental designation locations in the retrofit kit installation instructions. Only install in damp or wet locations if so indicated in the installation instructions.

### FOR RETROFIT KITS CERTIFIED TO CANADIAN REQUIREMENTS.

The retrofit kit is accepted as a component of a luminaire where the suitability of the combination shall be determined by authorities having jurisdiction. Product must be installed by a qualified electrician in accordance with the applicable and appropriate electrical codes. The installation guide does not supersede local or national regulations for electrical installations.

For use with incandescent surface mounted or recessed non-IC or recessed IC luminaires.

Suitable for open type luminaires.

Suitable for closed type luminaires.

Suitable for use with luminaires with maximum 6 lamps.

Suitable for use with luminaires with 1250mm x 800mm x 50mm lamp compartment.

Suitable for operation in luminaires with ambient not exceeding 45°C.

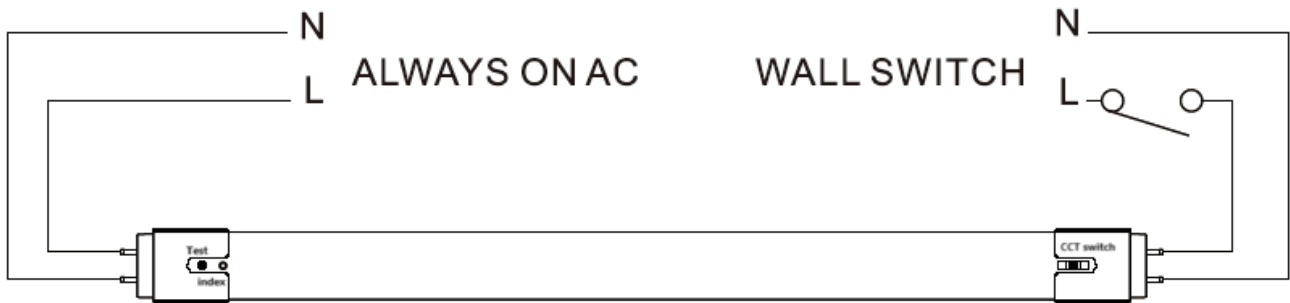
This equipment has not been investigated for use in an air-handling fixture, it is not suitable in a heated air outlet.

This equipment is to provide 90 minutes emergency lighting.

Self test monthly and yearly. If the indicator light keeps blinking, the emergency function is failed.

## Installation Instruction - SE Emergency LED Tube

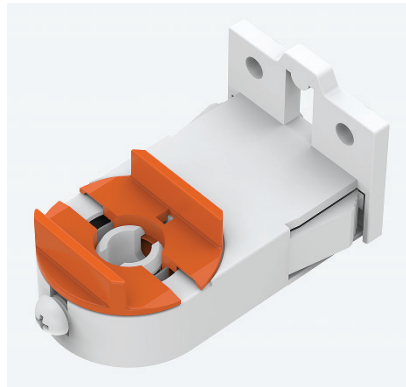
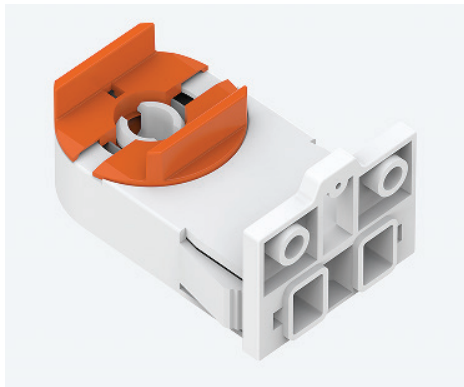
### Wiring Diagram



Step 1. Turn off the power, and take out the old fluorescent tubes.

Step 2. Bypass the ballast and remove starter where present.

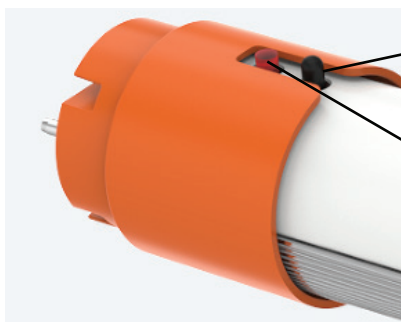
Step 3. Remove the existing lampholder/tombstone. Replace it with the Starco orange socket as shown below.



Step 4. Connect the wiring as the wiring diagram shown above.

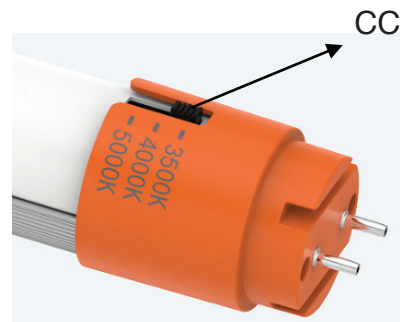
Step 5. Switch the CCT selectable switch on the tube to the CCT desired.

Step 6. Turn on the power and test the test button to ensure it is working properly.



Indicator light

Test button



CCT Switch